



**Creation Association
of Puget Sound**

CAPS

CAPS Meeting: August 12, 2007

3:00 pm ~ For refreshments, books & videos

Sunday afternoon, August 12, 2007

At 3:30 PM – Chris Ashcraft Speaking

Bellevue Church of Christ

10419 SE 11th St.

Bellevue, WA 98004

Call CAPS at: 425- 868-2107

<http://www.bellevuechurchofchrist.org/location/directio>



Christopher Wayne Ashcraft is a creation scientist, speaker, and educator. He obtained the Bachelor of Science in biology from Wayland Baptist University in 1989 and a Masters of Science in biology from Texas Tech University in 1996. Following graduation from TTU, Ashcraft spent two years in a Genetics PhD program at Oklahoma State University, then accepted a position as a Plant Transformation Specialist for EDEN Bioscience. He was a research technician for 12 years specialized in plant tissue culture and genetic transformation technology. He is currently enrolled in a Masters of Education program at the University of Washington, and is a high school science teacher at North Sound Christian School where he teaches Biology, Chemistry, and Creation Apologetics. He moved from research into teaching in response to a call from God to work in creation science missions. He has been active in the creation missions for over a decade. He is firmly committed to researching and teaching creation apologetics and speaks periodically at churches, schools, and creation organizations in the Northwest United States. He is the founder of the [Northwest Creation Network](#) and the [CreationWiki](#) internet encyclopedia where he serves as senior administrator. He also organizes the annual Seattle Creation Conference.

Topic: Love Your God with All Your Mind

In this presentation, Chris Ashcraft will provide illustrations of beauty and wonder within the creation that offer a testimony to the glory of God, but which hasn't been seen until modern times. With evolutionary indoctrination reaching epidemic proportions, these previously unseen treasures provide valuable tools for creation evangelism.

In 1 Peter 3:15 we are instructed to "Always be prepared to give an answer," and yet most Christian are unable to defend their faith through logic, reason, and empirical evidence. Using recent surveys and events to demonstrate the effects of evolutionism on society, this message will inspire those who attend toward scholarly pursuits in creation apologetics.

Chris plans to show scanning electron microscope pictures of nature.

Such as: Butterfly photonic crystals

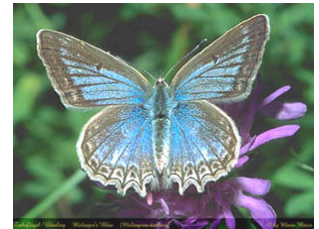
<http://www.intute.ac.uk/sciences/spotlight/issue10/butterfly.html>

http://newton.ex.ac.uk/research/emag/butterflies/iridescence_in_nature.html

Picture and specs on the Morpho butterfly:

<http://entweb.clemson.edu/museum/buttrfly/exotic/bfly7.htm>

<http://www.pubmedcentral.nih.gov/articlerender.fcgi?artid=1691047>



Female P Daphnis.
Courtesy of photographer, Mario Maier

Find CAPS Events, Articles & Media at: <http://caps.nwcreation.net/>
For more Chris Ashcraft Bio: <http://www.nwcreation.net/ashcraft>
See Chris's Website: [Northwest Creation Network](http://www.nwcreation.net/) at: <http://www.nwcreation.net/>



**Creation Association
of Puget Sound**



Coming Events:

August 23, 24 & 25th ~ The Annual [Seattle Creation Conference](#)

September 9, 2007 ~ Next CAPS Meeting: [DVD: LIFE STORY II](#)

Volunteers are needed to video our regular public meetings. To volunteer, call our President, Dr. John Johnson at: 425-868-2107.

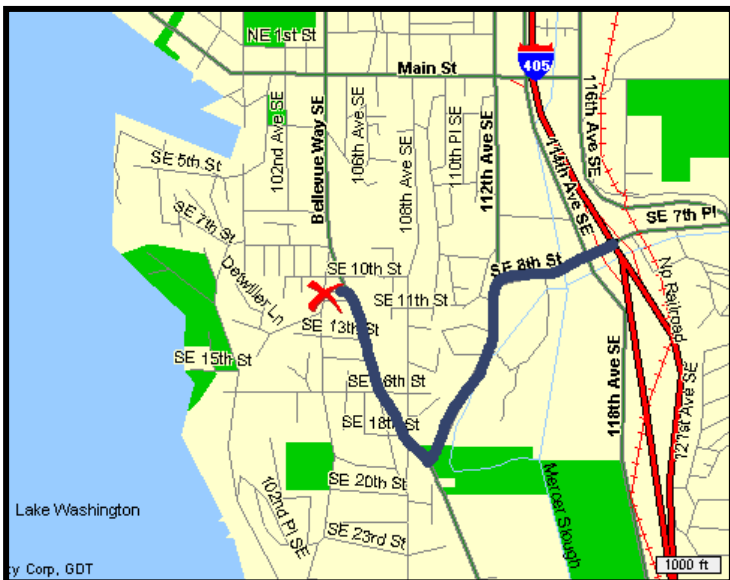
A **Membership** of only **\$15/yr** is to your advantage –10% off on all book purchases.

A **Life Membership** is now **\$150**

A Non-member **Donation** of **\$10/yr** is necessary to keep your name on our US Mail list.

CAPS has a list of 227 Emails of those records on our database of 515 addresses. We would like to identify those willing to receive their monthly mailings electronically only, thus saving CAPS about \$.50 per letter mailed via US Postal Service. If you would like to be on such a list please Email our Membership Chair, Loren Nelson at: nelson1589@comcast.net , Thank you.

Map and Driving Directions : **From the North Seattle area:** Take I-5 South to 520 East to I-405 South to SE 8th St Exit, Turn right onto SE 8th, Turn left onto 112th Ave SE, Turn right onto Bellevue Way. From Bellevue Way, go to SE 11th St which is south of downtown Bellevue, Turn West onto SE 11th St; **Bellevue Church of Christ** will be on your left. **From South:** Take I-5 North or SR167 North to I-405 North, Take I-405 North to the SE 8th Exit, Turn left onto SE 8th, Turn left onto 112th Ave SE, Turn right onto Bellevue Way, Turn left onto SE 11th St, Bellevue **Church of Christ** will be on your left.
Link to Church Website: <http://www.bellevuechurchofchrist.org/maps/directionsbellevue.htm>



CAPS is having regular monthly meetings, and special meetings for touring speakers, generally at 3 PM on the second Sunday each month at the Bellevue Church of Christ. This serves as a forum to promote the development of creation-science education. We have lectures or videos, with refreshments and fellowship. Come and learn about Creation Science, help us plan activities.

Please Bring Refreshments at 3 pm

Find CAPS Events, Articles & Media at: <http://caps.nwcreation.net/>
For more Chris Ashcraft Bio: <http://www.nwcreation.net/ashcraft>
See Chris's Website: Northwest Creation Network at: <http://www.nwcreation.net/>